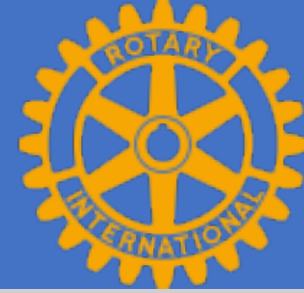


Elmbrook Rotary



Peace Building Project



Violence Breeds More Violence

Milwaukee is *No Exception*



Disturbing Headlines Fill Media

Are police 'downplaying hate crime' possibility?



Karen Pilarski
Now News Group

The lawyer for the Brookfield man who found a noose hanging from a tree on his street recently said the police department is "downplaying the possibility this was a hate crime." Richard Shaw II said he doesn't believe

block of West Bluemound Road outside the home of an Asian family, who was out of town. A member of that family recently took their own life by hanging, police said.

"It certainly throws a different light on the possibility here," Shaw said.

heard about the noose, Evans said. Some members are from the South and know of people who have been lynched or run out of their homes.

21 | WEDNESDAY, AUGUST 7, 2019 | WEST NOW

Man says he was racially profiled when trying to make return at Home Depot

Karen Pilarski

Lyft driver accused of using racial slur, pointing gun

Karen Pilarski
Now News Group



As one of the men walked in front of the car, he said, the driver pointed the gun toward

was taken into custody at his Milwaukee home. He told police the two men asked him to make a U-turn and he stated he didn't need them to tell him

tial court appearance. His next court date is Sept. 9.

A Lyft representative released the following statement:
"Safety is fundamental to Lyft. The



The Cure Violence Model

Used Successfully in

Chicago

London

Amsterdam

New York City

Baltimore



Peace Building Concept Development

Sue Cerletty

Linda Edelstein

Mark Zalewski

Doug Jacobson

Mark Thurner

Greg Bonk

Jan Constable

Kevin Roche

Tom Hochuli

Wally Smanski

Mike Schmeling



STREET LIFE

Milwaukee Blueprint for Peace

Program Goals



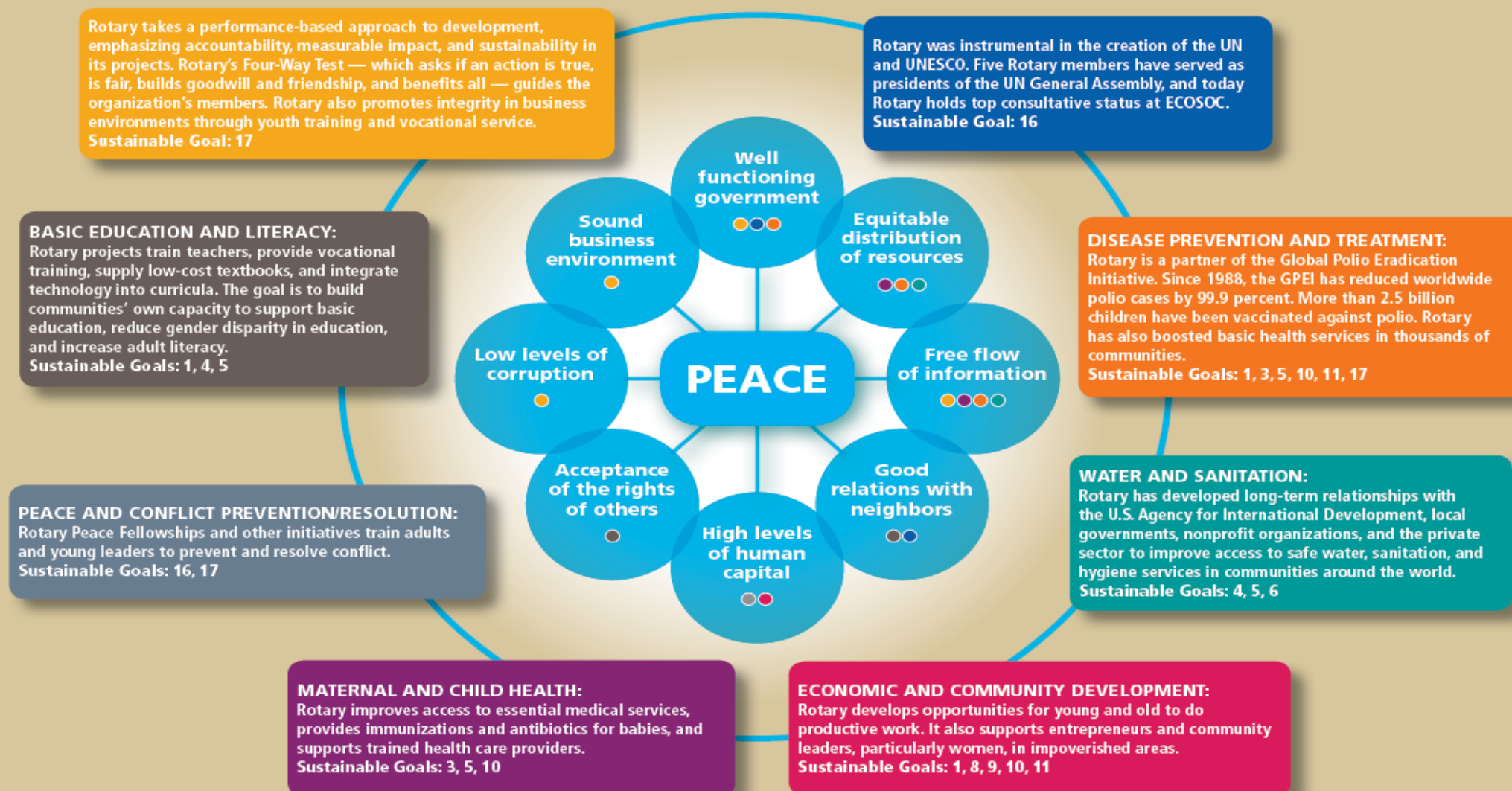
*“It is true that the way to violence is a well paved highway
but the way to Peace is still a wilderness”*

Paul Harris 1945



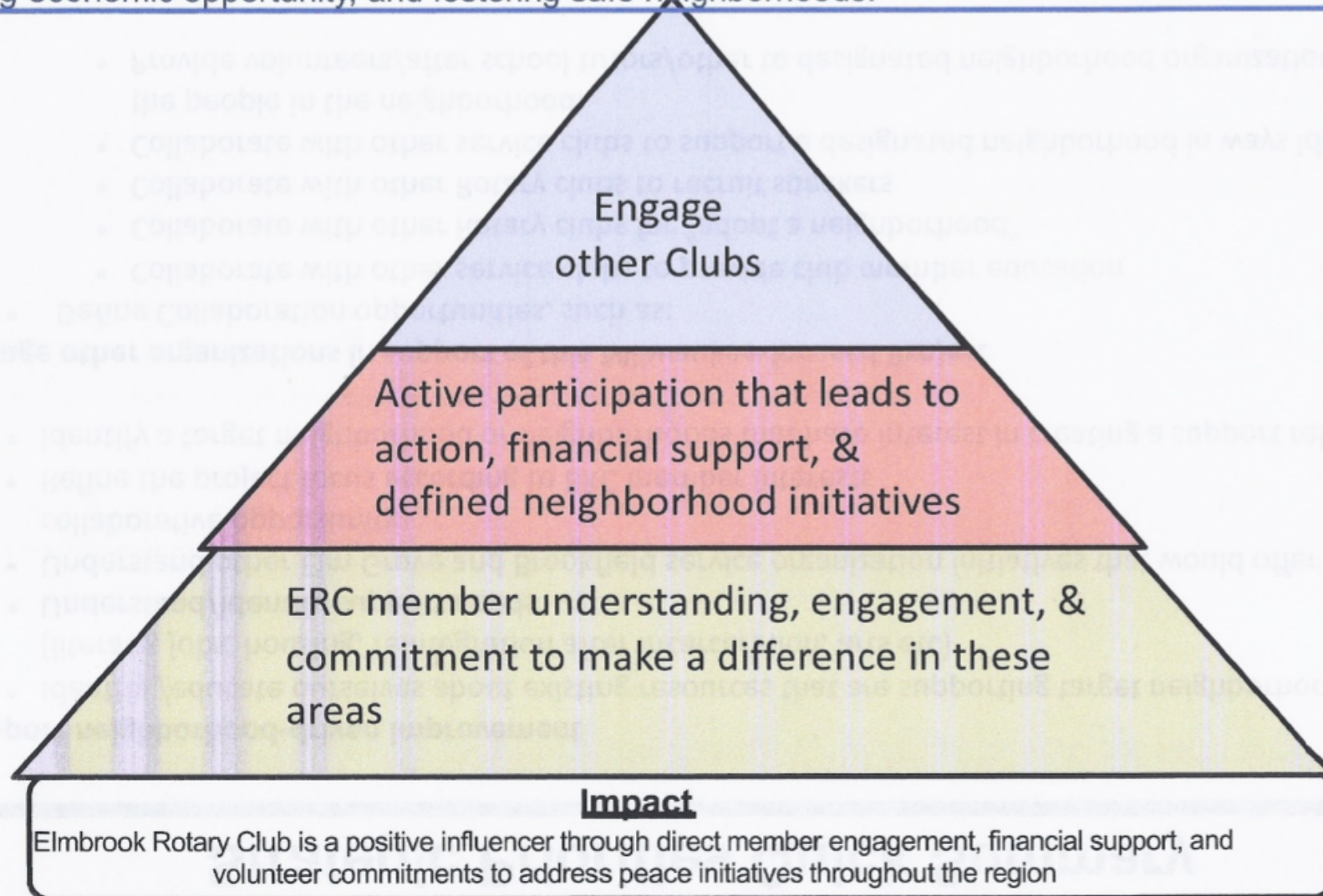
BUILDING SUSTAINABLE PEACE

The eight Positive Peace factors that the Global Peace Index (GPI) identifies correlate strongly to other measures of progress, including the UN's Sustainable Development Goals. This makes the GPI useful to NGOs like Rotary in assessing the Impact of their development projects. This graphic shows how Rotary's principles and its six areas of focus connect to the optimal conditions for sustainable peace.



Elmbrook Rotary Action Pyramid

Elmbrook Rotary Club is seen as a leader throughout our region and District 6270 in understanding, communicating, supporting, and engaging in peace initiatives by supporting children, youth & families, promoting economic opportunity, and fostering safe neighborhoods.



Year One – Plan of Action

- Register as a Rotary Peace Building Club
- Establish an adhoc committee for Peace Building
- Plan and organize a series of Friday morning presentations
 - To increase club member knowledge about equality initiatives that are underway in different parts of Milwaukee.
- Establish a Peace building discussion group(s)
 - To explore history/cultural structures that have caused and maintained inequality, and bring focus to unintentional bias
- Develop an Advocacy Plan
 - To raise regional Rotary Club awareness about the challenges of violence in Milwaukee and the opportunities for Rotary Clubs to support purposeful change.
- Develop an Action Plan to partner with a designated Milwaukee neighborhood
 - To help achieve its goals toward creation of a peaceful and safer neighborhood.
 - In the process, take advantage of the opportunity to apply what we have learned about unintentional bias.

Time to *Get Involved!*

- Awareness Building
 - Tom H, Doug J, Linda E, Kevin R
- Neighborhood Project Development
 - Jan C, Erik M, Sue C, Mark T
- Rotary Funding
 - Erik M, Wally
- Club Speakers
 - Sue C, Noaman
- RI Connection
 - Mark Z, Mike S

